

WATER WORKS & SEWER BOARD
 CITY OF ANNISTON
 CHOCCOLOCCO WWTP
 IMPROVEMENTS
 ANNISTON, ALABAMA



PROJECT NO.	98062	
DESIGNED	PEB	
DRAWN	MOS	
CHECKED	RUH	
APPROVED		
DATE	JULY, 1999	
REVISIONS		
NO.	DATE	DESCRIPTION
1	NOV. 2006	RECORD DRAWING

**RECORD
 DRAWING**

SHEET TITLE
 HEADWORKS BUILDING
 FLOOR PLAN &
 WALL SECTIONS

SHEET NO.
A3.01

TYPICAL BUILDING CONSTRUCTION NOTES:
 (REFER TO WALL SECTIONS 04 & 05 THIS SHEET)

TYPICAL ROOF CONSTRUCTION:

Single Ply Membrane Roof Over
 Tapered Rigid Insulation
 w/ 1/8" min. Slope per ft.
 2" MIN. Thickness on
 Precast Concrete
 Double Tee Units - See Structural
 for Size

TYPICAL EXTERIOR WALL CONSTRUCTION:

Split-Rib Concrete
 Masonry Units w/ Air Space
 on 12" CMU w/ Galvanized
 Reinforcement 16" OC Vert and
 Adjustable Anchors @ 16" OC
 Horizontally

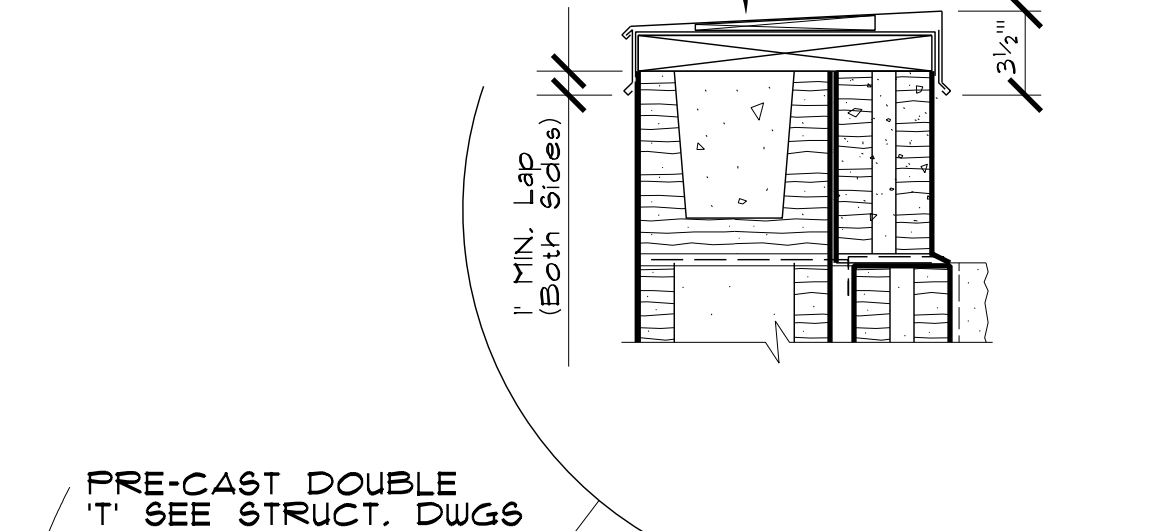
TYPICAL FLOOR SLAB CONSTRUCTION:

Concrete Slab - See Structural
 for Size and Reinforcement -
 over 6" Mill Vinyl Vapor Barrier
 on 4" Crushed Stone on
 Compacted Subgrade.

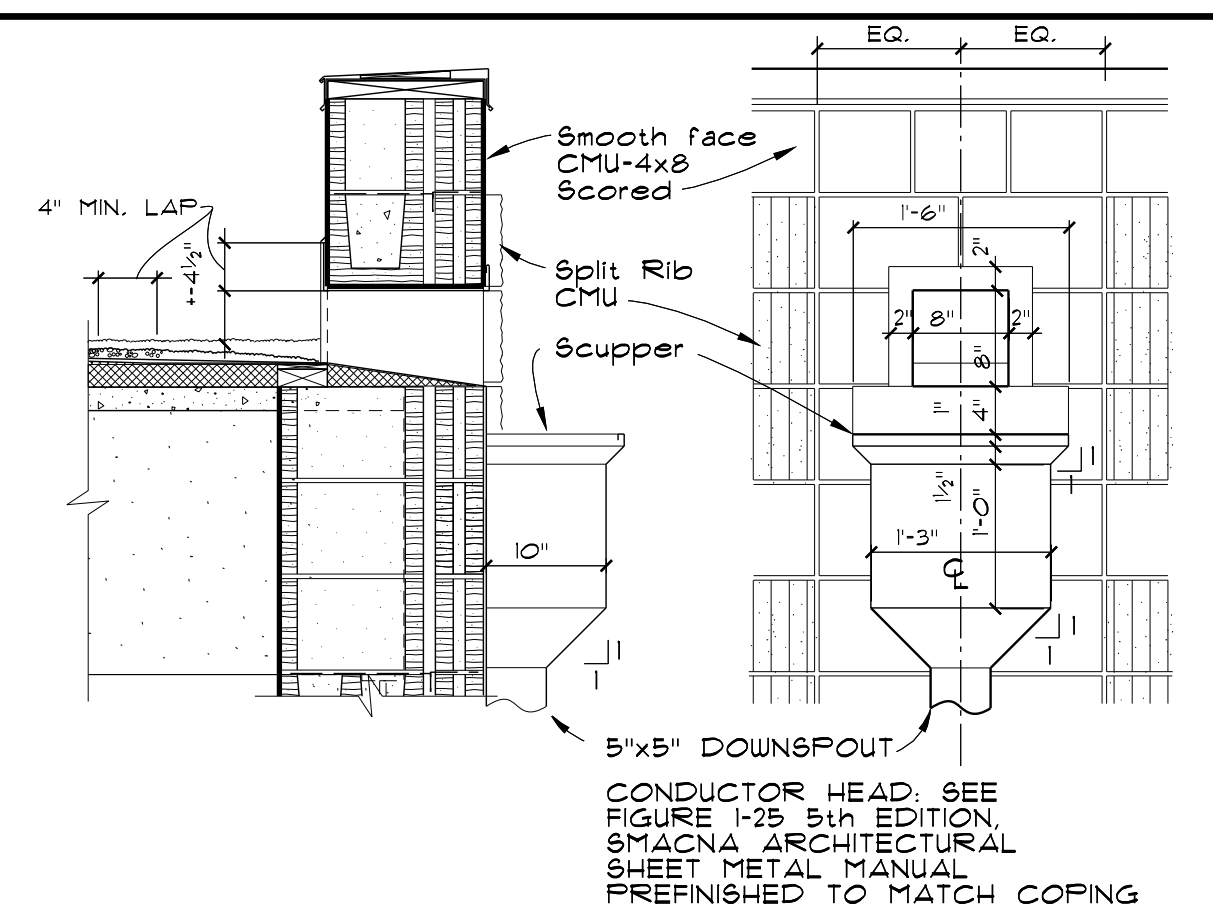
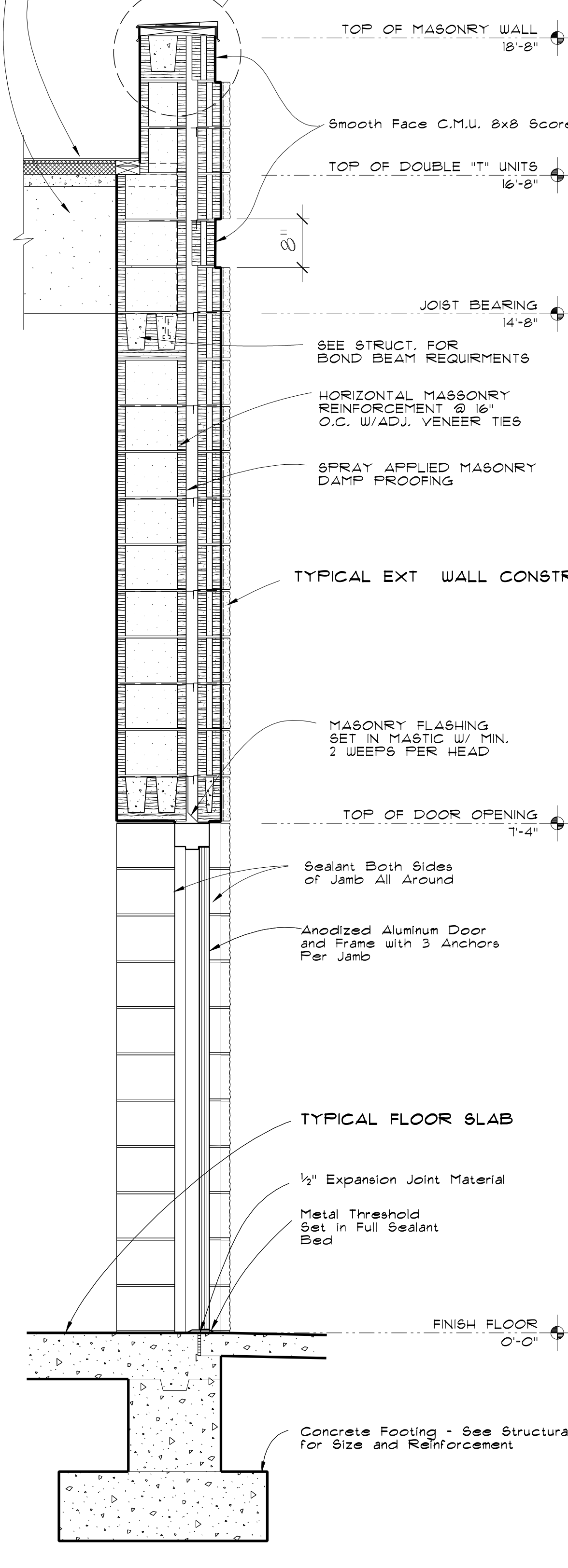
GENERAL NOTES

1. Do Not Scale Drawings.
2. Dimensions Are Shown to Outside Face of CMU.
3. Refer to Mechanical Drawings for F.F.E.

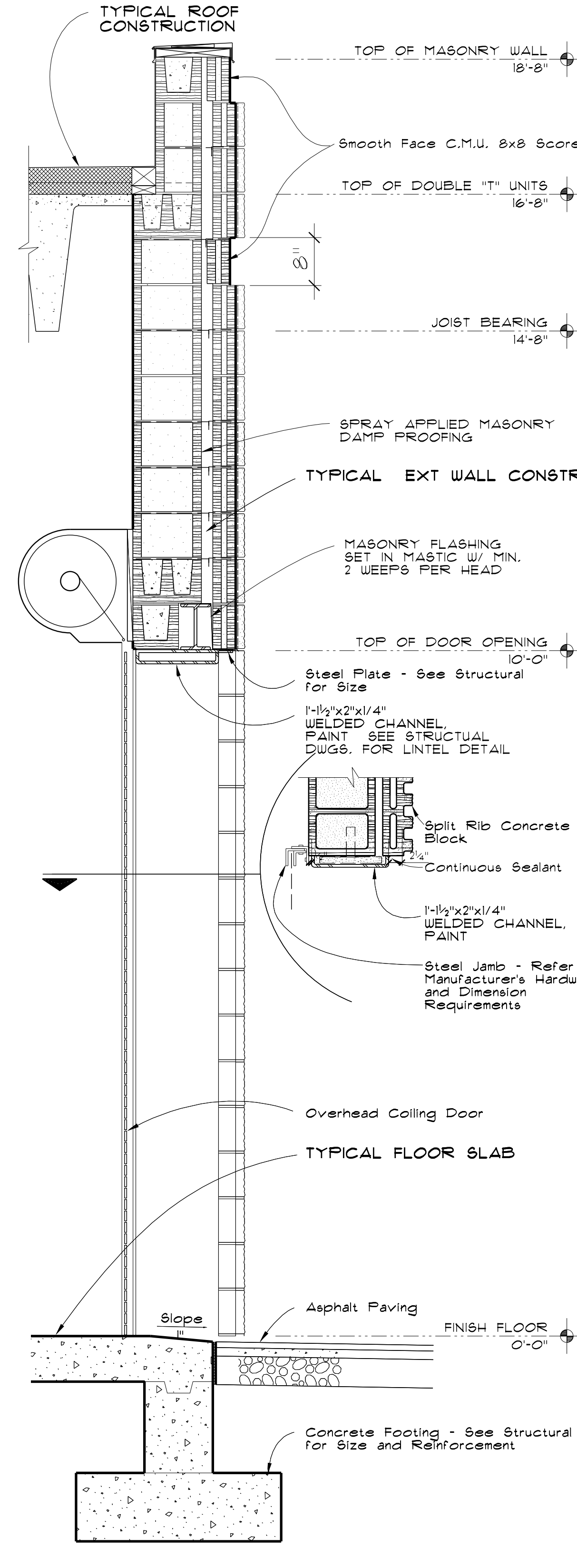
PRE-FINISHED
 22 GA MET. COPING:
 PER SMACNA
 ARCHITECTURAL
 SHEET METAL
 MANUAL, SEE
 FIG. 3-1 & 3-4C



05 WALL SECTION



19 SCUPPER



03 FLOOR PLAN

